

**5. Organizational Data**  
**Attachment B, Section 5 Initial Six Year Agreement**

A\*. Number of students by classification

a) Headcount and FTE, undergraduate and graduate/professional school students

Headcount Fall 2010	FTE 2009/2010
2667	1899.3

B\*. Number of instructional staff members

a) Number of instructional staff : 152

b) FTE instructional staff: 111.1

C\*. Average class student to instructor ratio

Average Class Size = 18.28\*\*

Average undergraduate class size at the institution

Average Class Size = 18.28\*\*

\*\*There data do not agree with the 18.1 reported by BoR. This discrepancy could be due to when the average class size was calculated.

The 18.28 reported above was determined using fall 2010 14<sup>th</sup> day enrollments.

D\*. Average number of students per instructor

a) Ratio of FTE students to instructors = 17.1

\*LSUA found an error in the fall 2009 SSPS submission and is working with BoR to submit a corrected file. The AY 09-10 FTE is from SCHBRCRPT2K.

E. Number of non instructional staff members in academic colleges and departments

a) List by college

<b>College of Arts and Sciences</b>		
Departments	Number	FTE
Arts, English, & Humanities	1	1
Biology	2	2
Behavioral & Social Sciences	1	1
Mathematics & Physical Sciences	1	1
Subtotal	5	5
<b>College of Professional Studies</b>		
Allied Health	2	2
Business Administration	1	1
Education	4	4
Nursing	2	2
Subtotal	9	9
<b>Total</b>	<b>14</b>	<b>14</b>

F. Number of staff in administrative positions

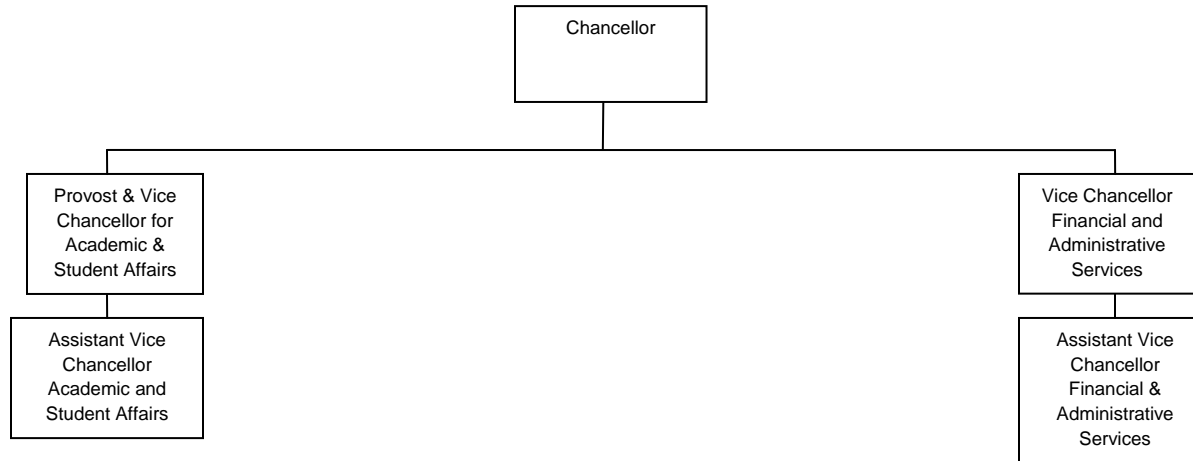
- a) Executive/managerial as reported in the employee Salary Data System (EMSAL)  
 Data System (EMSAL) = 3

<b>Department</b>	<b>EEO Code = 1</b>	<b>FTE</b>	<b>EEO Code = 3</b>	<b>FTE</b>	<b>EEO 1 and 3</b>	<b>FTE</b>
Academic Affairs	1	1			1	1
Accounting Services	1	1	1	1	2	2
Advising Center			3	3	3	3
Athletics	1	1	1	1	2	2
Chancellors Office	1	1	1	1	2	2
Enrollment Management	3	3	7	7	10	10
Facility Services	1	1			1	1
Finance and Administrative Services	2	2	1	1	3	3
HRM	1	1	2	2	3	3
IET Services	1	1	1	1	2	2
Institutional Advancement	1	1	1	1	2	2
LSUA Downtown	1	1	2	2	3	3
Media Relations			1	0.33	1	0.33
Procurement & Property Management	1	1	2	2	3	3
Student Services	1	1	4	3.33	5	4.33
<b>Total</b>	<b>16</b>	<b>16</b>	<b>27</b>	<b>25.66</b>	<b>43</b>	<b>41.66</b>

G. Organizational chart containing all departments and personnel in the institution down to the second level of the organization below the President, chancellor or equivalent position

a) To the level of Dean or equivalent

**Louisiana State University at Alexandria  
 Organizational Chart  
 October 2010**



H. Salaries of all personnel identified in subparagraph (G) above and the date, amount, and type of all increases in salary received since June 30, 2008.

Position	Salary	Salary Increases since June 30, 2008		
		Date	Amount	Type
Chancellor	\$215,000		0	
Provost & Vice Chancellor for Academic and Student Affairs	\$140,000		0	
Vice Chancellor for Financial & Administrative Svc's	\$100,848		0	
Assistant Vice Chancellor for Academic & Student Affairs & Director of Advising Center	\$69,500		0	
Assistant Vice Chancellor for Financial & Administrative Svc's	\$56,000		0	